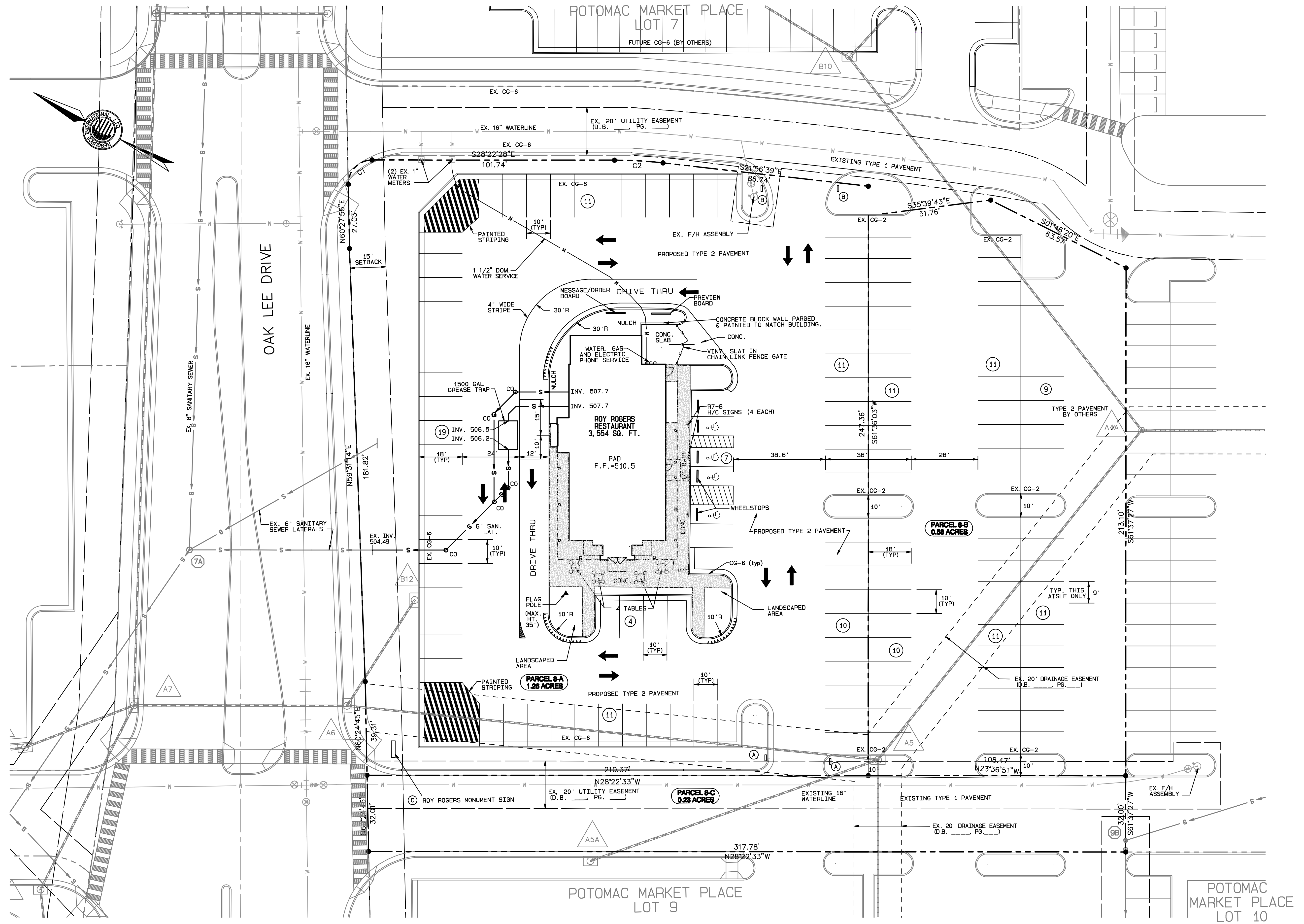


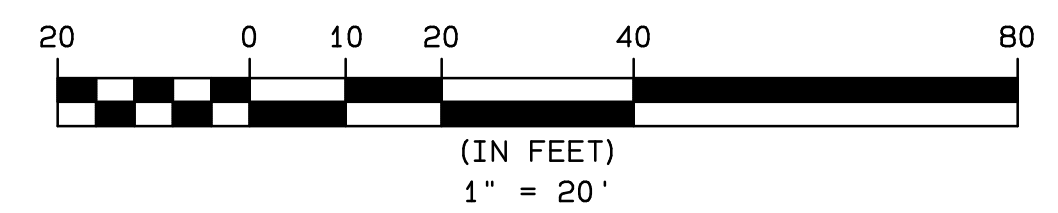
4/24/2006 11:04:02AM
 PL\206019.01 Roy Rogers\ROYROGERS-SITE.dwg



CURVE	ARC	CHORD BEARING	RADIUS	DELTA	CHORD	TANGENT
C1	15.91'	S37°57'16"E	10.00'	91°09'37"	14.28'	10.20'
C2	20.43'	N25°09'33"W	182.00'	6°25'49"	20.42'	10.22'

SIGN SUMMARY

DESIGN	NAME	SIZE
(A)	ENTER / DRIVE THROUGH	30"X20"
(B)	ENTER SIGN	30"X20"
(C)	ROY ROGERS MONUMENT SIGN	72"X83.25" (SIGN) 80"X20" (BASE)



REVISIONS:

DESIGNED:	MTF
DRAWN:	RHM
CHECKED:	CDR
DATE:	4-13-2006

PLAMONDON ENTERPRISES, INC.
ROY ROGERS RESTAURANT
POTOMAC MARKET PLACE
CITY OF RANSON, WEST VIRGINIA
 SITE AND UTILITY PLAN

PROJECT NO.:
206019.01
 SHEET:
C-1



RESOURCE INTERNATIONAL, LTD.
 ENGINEERS • SCIENTISTS • SURVEYORS • PLANNERS
 P.O. BOX 6160 • 9560 KINGS CHARTER DRIVE • ASHLAND, VA 23005
 (804) 550-9200 FAX (804) 550-9259